

The logo for Network Defense Essentials (NIDE) features the letters 'NIDE' in a large, bold, black sans-serif font. A vertical red line is positioned between the 'N' and 'D'. Below the letters, the words 'Network', 'Defense', and 'Essentials' are written in a smaller, black sans-serif font, separated by spaces.

NIDE

Network Defense Essentials

The background of the slide is a photograph of a diverse group of students sitting at desks in a classroom. They are all looking towards the right side of the frame, presumably towards a teacher. The students are dressed in casual attire, and the classroom setting includes bookshelves and a bulletin board in the background.

Module 00

**Welcome to Network Defense
Essentials Class!**

- Student Introduction

Introduction

Instructor Introduction

■ Name

■ Qualification

■ Industry Experience

■ Teaching Experience

Student Introduction

■ Name

■ Expectations



What is NDE Program?



- ✓ Network Defense Essentials (NDE) is a security program covering the **fundamental concepts of network security**



- ✓ It equips students with the skills required to **identify the increasing network security threats** that reflect on the organization's security posture and **implement general security controls** to protect the underlying networking infrastructure from unauthorized access, modification, destruction, or disclosure



NDE Course Outline

01 Network Security Fundamentals

02 Identification, Authentication, and Authorization

03 Network Security Controls - Administrative Controls

04 Network Security Controls - Physical Controls

05 Network Security Controls - Technical Controls

06 Virtualization and Cloud Computing

07 Wireless Network Security

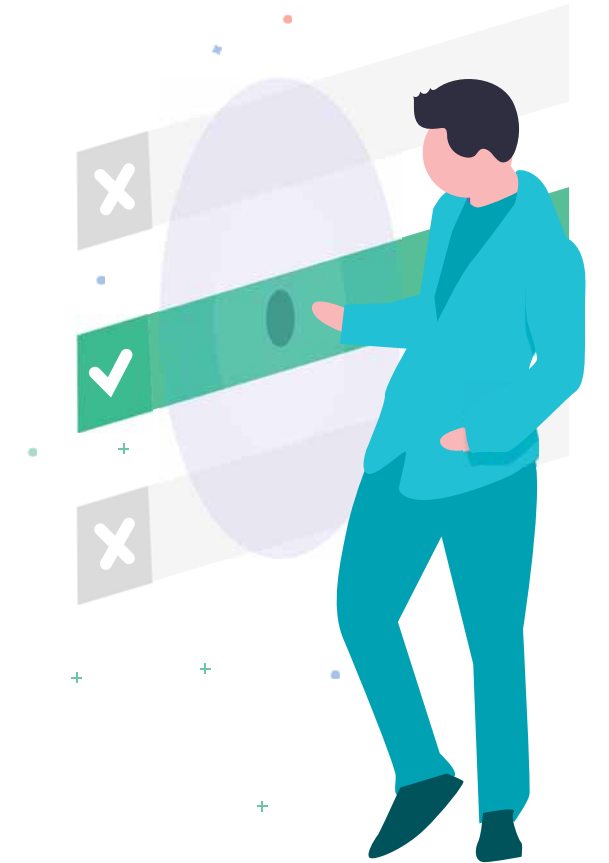
08 Mobile Device Security

09 IoT Device Security

10 Cryptography and PKI

11 Data Security

12 Network Traffic Monitoring



What will you Learn?

Students going through NDE training will learn:

- 1 Key issues plaguing the network security
- 2 Essential network security protocols
- 3 Identification, authentication, and authorization concepts
- 4 Network security controls
 - ✓ Administrative controls (Frameworks, laws, acts, and security policies)
 - ✓ Physical controls (Physical security controls, workplace security, and environmental controls)
 - ✓ Technical controls (Network segmentation, firewall, IDS/IPS, honeypot, proxy server, VPN, SIEM, UBA, and anti-malware)



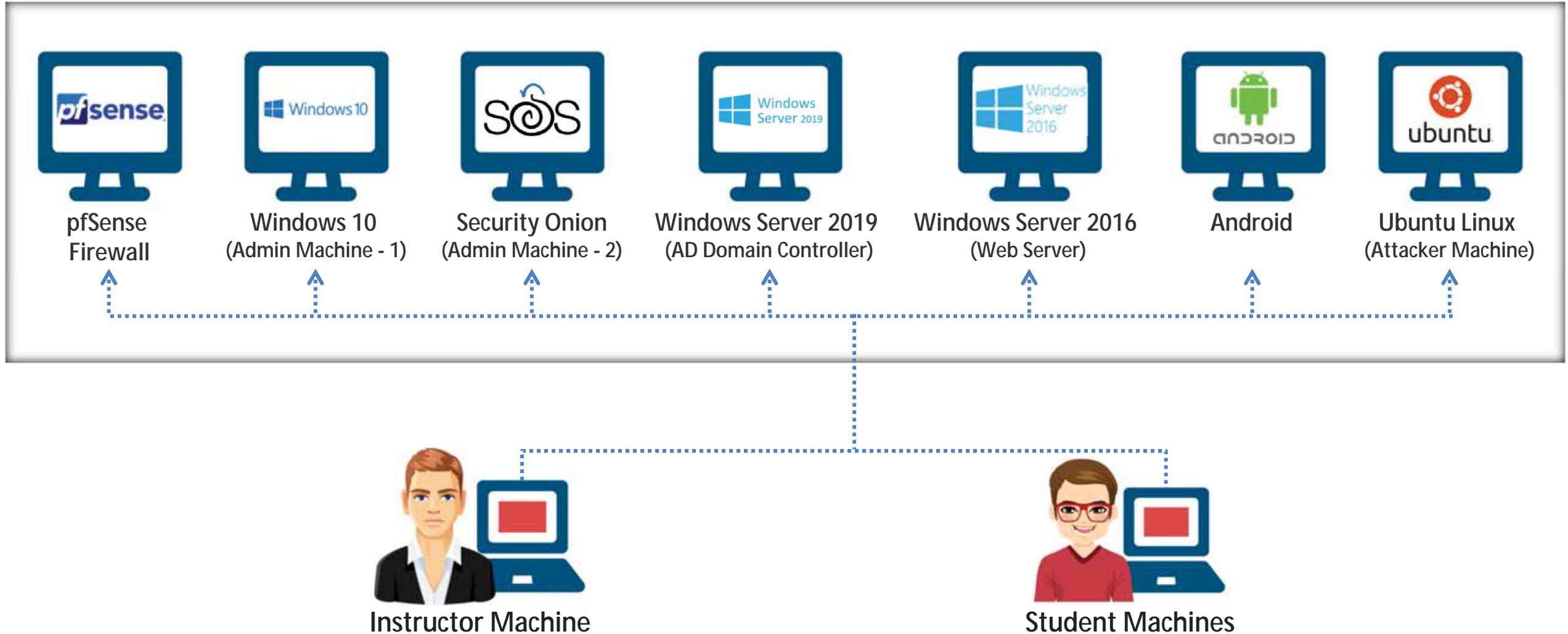
What will you Learn?

Students going through NDE training will learn:

- 5 Fundamentals of virtualization, cloud computing, and cloud security
- 6 Wireless network fundamentals, wireless encryption, and security measures
- 7 Fundamentals of mobile and IoT devices and their security measures
- 8 Cryptography and PKI Concepts
- 9 Data security, data encryption, and data backup and data loss prevention techniques
- 10 Network traffic monitoring for suspicious traffic



Lab Environment



Instructor and Student Machine Operating System: Any Operating System Capable of Running VMware (Fully Patched)

Welcome to NDE Class!